

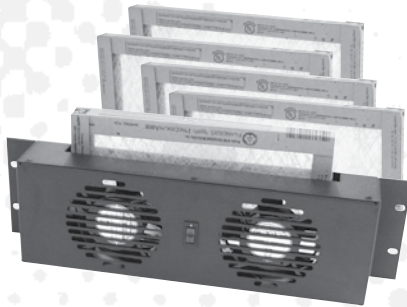


# KAE CORPORATION

## Cooling Fans



FAN-1 1U Rack Mount Fan System



DEF-3 3U Dual Exhaust Fan with Disposable Filter



TORF-1 1U Top of Rack Dual Fan System



TORF-1 T Single top of Rack Fan

KAE Corporation introduces the FAN-1, 1U Rack Mount Fan System. Engineers have inquired about the possibility of designing a compact fan exhaust system to replace the 1U vented blank panels that just did not provide enough cooling for those 'really hot' pieces of electronic equipment. KAE Corporation responded to this request with the FAN-1 system. Utilizing three (3) mini (40x40 mm) DC-powered ball bearing fans, the FAN-1 will exhaust up to 15 cubic feet of air per minute (cfm). A single rack unit in a 30" deep rack has approximately .57 cubic feet of space. With the FAN-1, the engineer now has a means of exhausting the hot air out of this single rack space up to 25 times per minute. Housed in a standard 19" rack mountable panel, the FAN-1 comes with a front panel on/off switch. The FAN-1 also comes standard with a 12v 1.25 amp AC-DC Converter (Wall Wart type power supply). You may also order the FAN-1 without the AC-DC Converter (model # FAN-1-NAC). The DC Socket is a standard 2.1 x 5.5 mm center positive. Each mini fan is rated as follows: 12v DC, .07 amp, 5 cfm, 31 dB, 8000 rpm.

KAE Corporation offers a cost effective cooling fan that mounts on a 3U vented panel. The rack mountable cooling fan, the FN-1/3, comes complete with 105 CFM Muffin fan, rear finger guard and power cord. The standard fan is rated at 43 decibels. An option Whisper fan is available, rated at 57 CFM at 20 decibels. The FN-2/3 dual fan that mounts to our 3 U (5.25" height) vented panel, provides 210 CFM of air movement. This unit may also be ordered with a 23" deep shroud to improve efficiency, FN-2/3 S.

In discussions with several broadcast engineers, there was a need identified for a top of rack exhaust fan system that would pull the cool conditioned air that is pumped into the bottom of the rack up and out. KAE Corporation offers the TORF-1, a top of the rack dual fan system to accomplish this. The dual fan system occupies 1 U (1.75" height) from the front of the rack. The fans extend up an additional 1.75" in the interior of the rack. Finger guards are fitted on the fans. The dual fan system is rated at 1100 CFM. The tray is 23" deep with rear brackets to provide structural integrity. A back lit on/off switch is located on the front of the panel.

The DEF-3 3U Dual 105 CFM exhaust fan with removable and disposable furnace type filter. The DEF-3 rack mounts and allows for removal of the filter from the front of the rack without disconnecting the fan or frame. Get rid of those nasty dust muffins. Extra filters are available in quantities of 5.



## KAE CORPORATION

955 East 500 South Salt Lake City, Utah 84102  
801-238-2300 • FAX 801-238-3900  
[www.kaecorp.com](http://www.kaecorp.com)